



CONEJO

Elementary School & Open Classroom Leadership Magnet

COVID-19 Resources for Families



| HELPFUL CONTACT INFORMATION | |
|--|--|
| If your student has symptoms of COVID-19, or tests positive for COVID-19, please contact: | Jacqueline Hernandez, Health Clerk (805) 495-7058; jacquelinehernandez@conejousd.org |
| If your student has other health concerns or illness, please contact: | Jacqueline Hernandez, Health Clerk (805) 495-7058; jacquelinehernandez@conejousd.org |
| For questions related to student's Short Term Independent Study, please contact: | Gloria Alamir, Office Manager (805) 495-7058; galamir@conejousd.org |
| CVUSD is proud to provide technology support to families. To receive tech help: | Visit: www.conejousd.org/TechSupport Call: (805) 498-0527 (8am-4:30pm, Mon.- Fri.) |
| To schedule a free COVID-19 test at the CVUSD & California state testing site located at 1336 E. Janss Road: | Register for appointments at: www.lhi.care/covidtesting or call 888-634-1123. Appointments are available to the community six days a week from 8am to 8pm (closed on Tuesdays). |

COVID-19 SCENARIO CHART: STUDENT CLOSE CONTACTS

**Close Contact* - No Symptoms
Unvaccinated, Unmasked**

- Quarantine at home.
- Quarantine ends after 10 Days from the last date of exposure to the person testing positive OR, NEW: Based on updated guidance from Ventura County Public Health (released 9/23/21), quarantine can end after Day 7 if a laboratory-based antigen or PCR (PCR preferred) is collected on Day 5 or later from the last exposure and tests negative.

**Close Contact* - No Symptoms
Vaccinated, Masked/Unmasked**

No quarantine is necessary for vaccinated students, either masked or unmasked, as long as they have no symptoms of COVID-19, and proof of vaccination is provided.

STUDENT TESTS POSITIVE FOR COVID-19

Full at-home isolation for 10 days regardless of vaccination status and mask-wearing

**If a Close Contact* has symptoms:
Immediately, remove from school, isolate at home.**

Close contacts who develop symptoms of COVID-19 must:

- Get tested for COVID-19
- If positive they must isolate for 10 days from the start of symptoms or the date of the positive test if no symptoms.
- If negative test they should continue quarantine and return only if fever free and symptoms have improved.

**Close Contact* - No Symptoms
Unvaccinated, Masked
SCHOOL SETTINGS ONLY
(MODIFIED QUARANTINE)**

** Both the exposed student and the student with COVID-19 were wearing a face mask during the whole time of close contact.

- Continues to attend school.
- Does not participate in extra-curricular activities in school or community setting.
- Modified quarantine can end after Day 7 if a laboratory-based antigen or PCR (PCR preferred) is collected on Day 5 or later from the last exposure and tests negative.

Students testing positive may return to school after 10 days of isolation, as long as they have no new symptoms AND are fever free for more than 24 hours without fever reducing medications.

*Close Contact is defined as within 6 feet for 15 cumulative minutes within a 24-hour period of someone with a confirmed case of COVID-19.
**The information in this chart is determined by guidance from the California Department of Public Health and Ventura County Public Health.

QUARANTINE & TESTING - FAQs

- Q1: When should students under quarantine or modified quarantine get tested for COVID-19?**
A1: Students should get tested twice a week. As stated in the above graphic, quarantine or modified quarantine for students without symptoms can end after Day 7, if a COVID test is collected on Day 5 or later from the last exposure and the test results are negative.
- Q2: What is Short Term Independent Study?**
A2: Students who are placed in quarantine, who are not permitted to physically attend class, are placed in Short Term Independent Study, coordinated by their school site. Students on quarantine stay enrolled with their teacher(s) and receive coursework to stay on pace with the class. Assignment are provided via SeeSaw (TK-2) or Canvas (3-12). To participate, a parent/guardian will sign and receive a copy of a master agreement which details all specific requirements of short-term independent study.
- Q3: How do schools determine close contacts?**
A3: As directed by state and local public health guidance, school officials conduct an investigation when the school is notified of any student testing positive. School administrators collect information directly from the student and/or parent/guardian, interview the student's teacher(s) and coaches/advisors, review all seating chart assignments, and verify that masks were worn indoors for classes and extra-curricular activities. The school directly communicates to any parent/guardian if any close contacts are required to quarantine based on the investigation. A formal communication then goes to any close contact, those who were in class with the individual but not close contacts, and then to the entire school community.



For the most up to date FAQs, COVID-19 resources, & guidance from health officials, please visit: www.conejousd.org/CVUSDForward

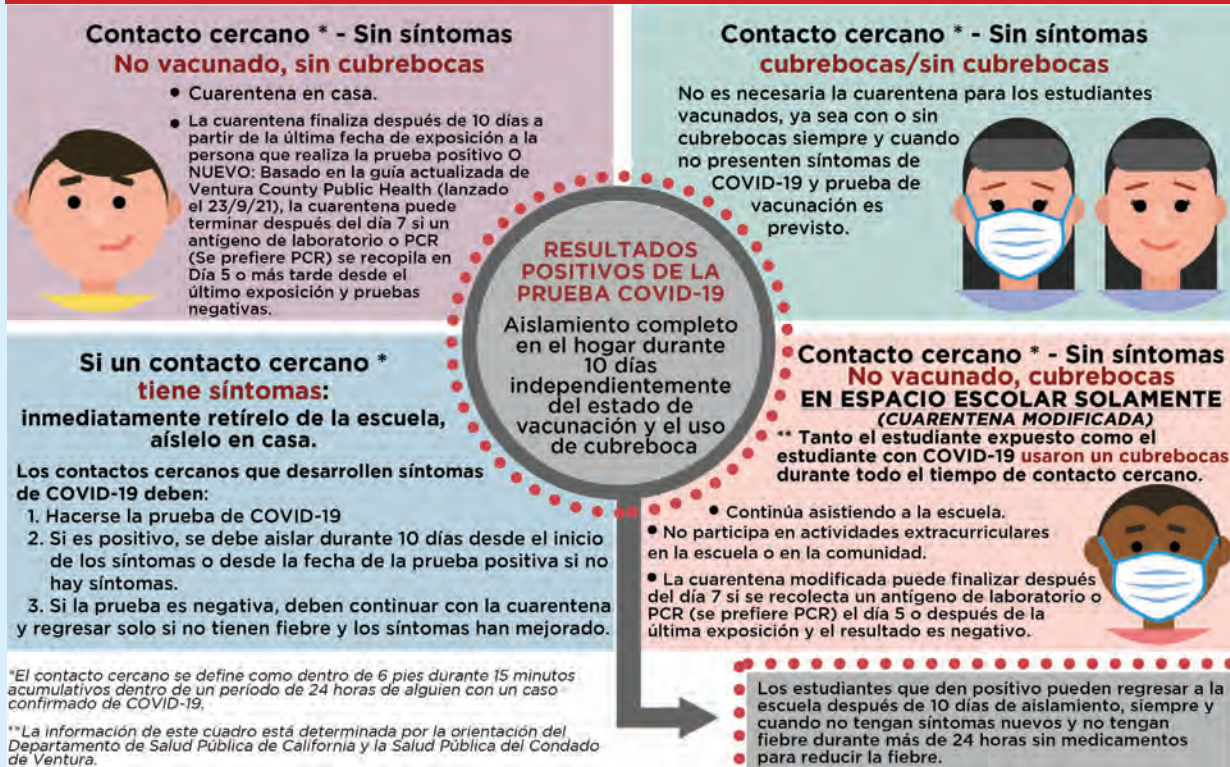
Recursos de COVID-19 para las familias



INFORMACIÓN ÚTIL SOBRE CON QUIEN COMUNICARSE

| | |
|---|--|
| Si su estudiante tiene síntomas de COVID-19 o si su estudiante da positivo en la prueba de COVID-19, comuníquese con: | Jacqueline Hernandez, Empleada de salud (805) 495-7058; jacquelinehernandez@conejourd.org |
| Si su estudiante tiene otros problemas de salud o enfermedad, comuníquese con: | Jacqueline Hernandez, Empleada de salud (805) 495-7058; jacquelinehernandez@conejourd.org |
| Si tiene preguntas relacionadas con el estudio independiente a corto plazo del estudiante, comuníquese con: | Gloria Alamir, Gerente de oficina (805) 495-7058; galamir@conejourd.org |
| CVUSD se enorgullece de brindar apoyo tecnológico. Para recibir ayuda técnica: | Visite: www.conejourd.org/TechSupport Llame al: (805) 498-0527 (8am-4:30 pm, lunes a viernes) |
| Para programar una prueba gratuita de COVID-19 en las pruebas estatales de CVUSD y California sitio ubicado en 1336 E. Janss Rd.: | Regístrese para citas en: www.lhi.care/covidtesting o llame al 888-634-1123. Las citas están disponibles para la comunidad seis días a la semana de 8 am a 8 pm (cerrado los martes). |

GRAFICA DE ESCENARIOS COVID-19: ESTUDIANTES CON CONTACTO CERCANO



CUARENTENA Y PRUEBAS: PREGUNTAS FRECUENTES

Q1: ¿Cuándo deben los estudiantes en cuarentena o cuarentena modificada hacerse la prueba de COVID-19?

A1: Los estudiantes deben hacerse la prueba dos veces por semana. Como se indica en el gráfico anterior. La cuarentena o la cuarentena modificada para estudiantes sin síntomas puede terminar después del séptimo día, si se recolecta una prueba de COVID el día quinto o más tarde de la última exposición y los resultados de la prueba son negativos.

Q2: ¿Qué es el estudio independiente a corto plazo?

A2: Los estudiantes que son puestos en cuarentena, a quienes no se les permite asistir físicamente a clases, son colocados en Estudio Independiente a Corto Plazo, coordinado por su escuela. Los estudiantes en cuarentena permanecen inscritos con su maestro (s) y reciben trabajo de curso para mantenerse al día con la clase. Las asignaciones se proporcionan a través de SeeSaw (TK-2) o Canvas (3-12). Para participar, un padre / tutor firmará y recibirá una copia de un acuerdo maestro que detalla todos los requisitos específicos del estudio independiente a corto plazo.

Q3: ¿Cómo determinan las escuelas los contactos cercanos?

A3: Según las indicaciones de la guía de salud pública estatal y local, los funcionarios escolares realizan una investigación cuando se notifica a la escuela de cualquier estudiante que dé positivo. Los administradores de la escuela recopilan información directamente del estudiante y / o padre / tutor, entrevistan al maestro (s) del estudiante y a los entrenadores / asesores, revisan todas las asignaciones de asientos y verifican que se hayan usado máscaras en el interior para las clases y actividades extracurriculares. La escuela se comunica directamente con cualquier padre / tutor si se requieren contactos cercanos para poner en cuarentena según la investigación. Una comunicación formal luego se dirige a cualquier contacto cercano, aquellos que estaban en clase con el individuo pero no contactos cercanos, y luego a toda la comunidad escolar.



CONEJO
Elementary School & OPEN CLASSROOM LEADERSHIP MAGNET